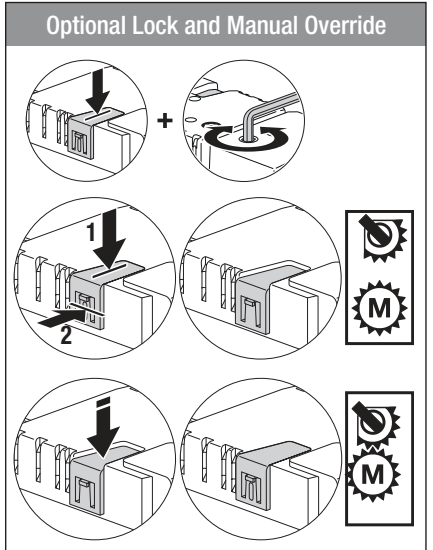
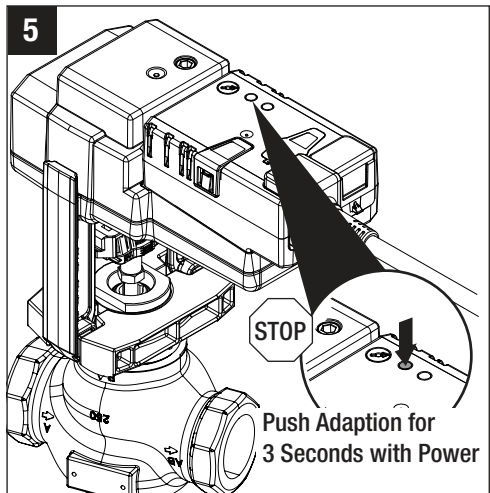
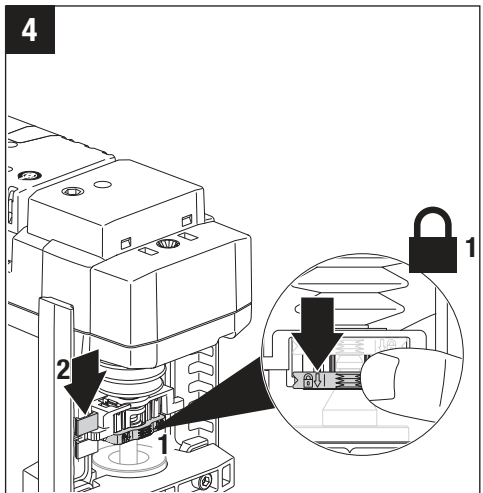
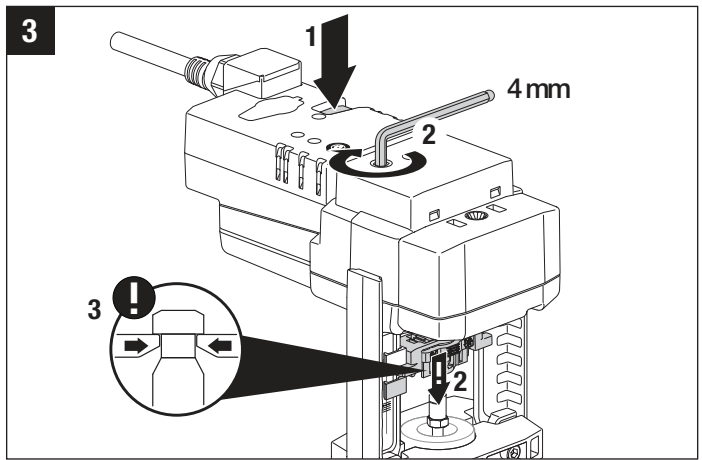
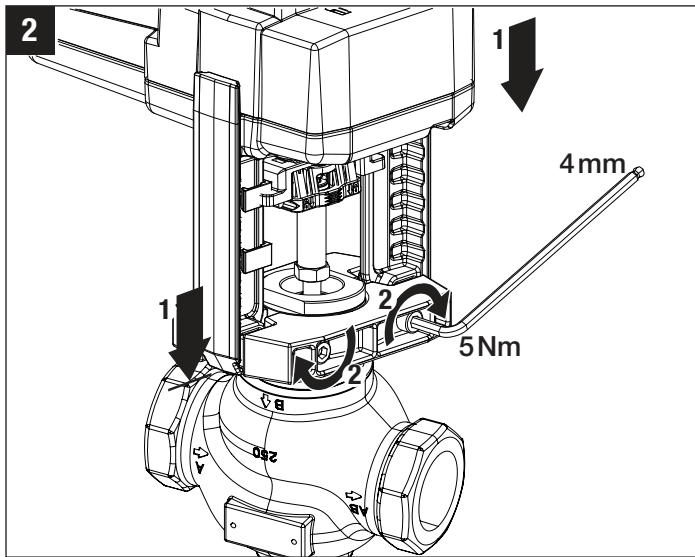
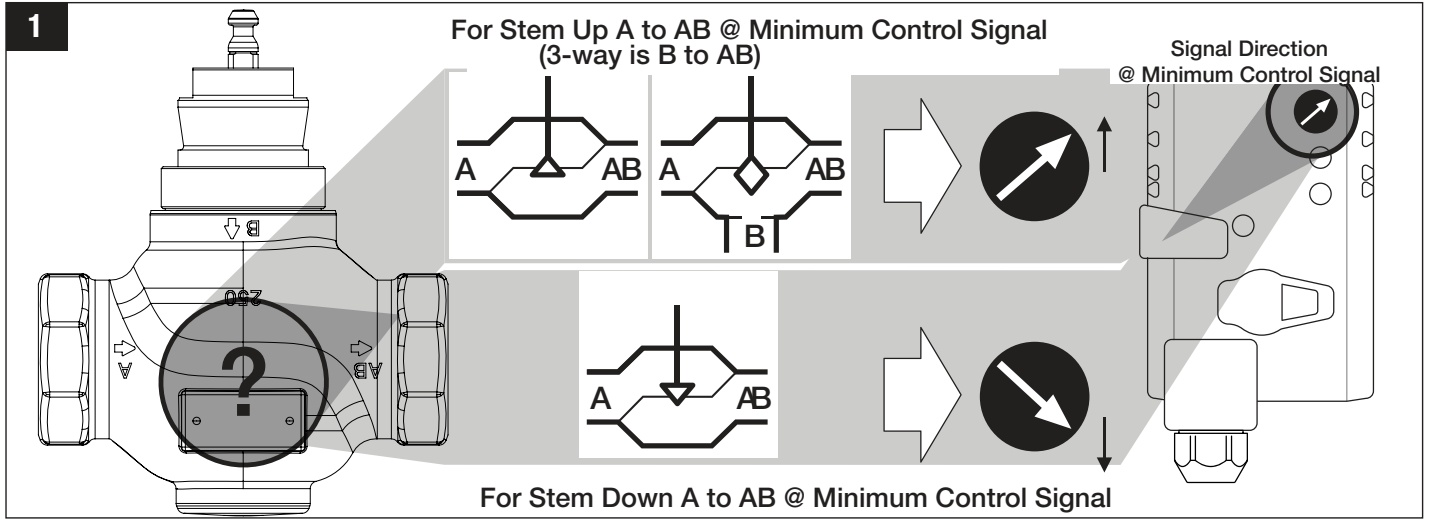


BGVL/G2/G3 Linkage with LV and SV Series Actuators

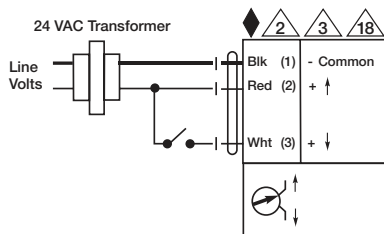


Subject to change. © Belimo Aircontrols (USA), Inc.

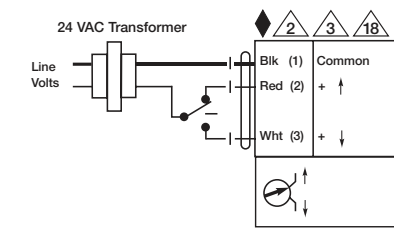
BGVL/G2/G3 Linkage with LV and SV Series Actuators

WIRING DIAGRAMS

Non-Spring Return Actuator with -3

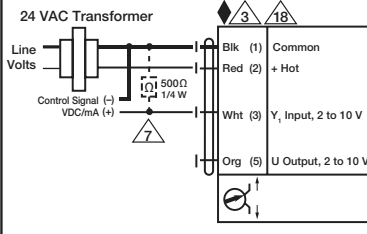


On/Off

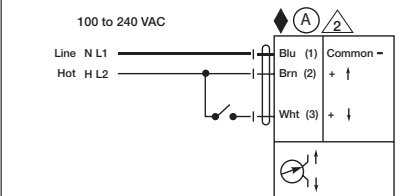


Floating Point

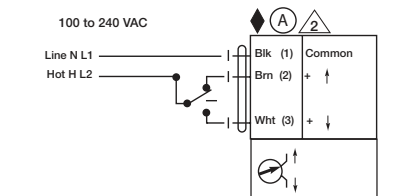
Non-Spring Return Actuator with -SR



VDC / 4 to 20 mA



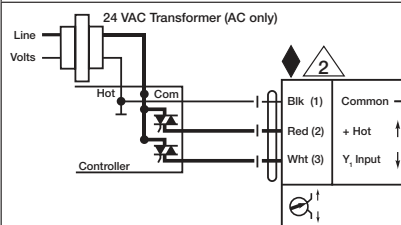
On/Off



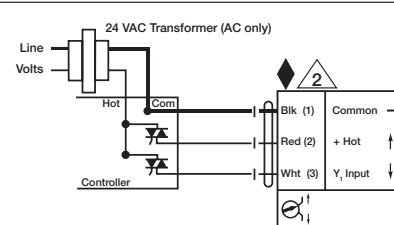
Floating Point



Selector Switch

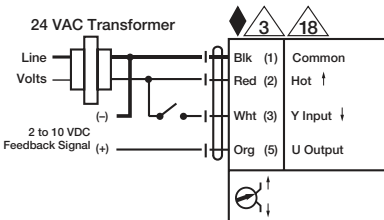


Triac Sink

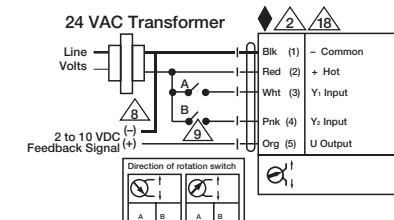


Triac Source

Non-Spring Return Actuator with MFT



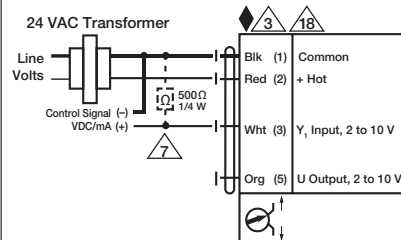
On/Off



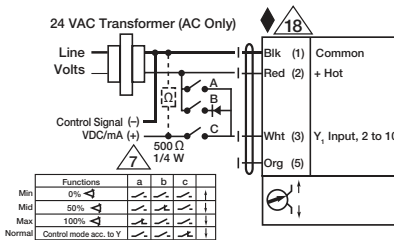
Floating Point

Notes:

- ◆ Meets cULus requirements without the need of an electrical ground connection
- Ⓐ Actuators with appliance cables are numbered.
- Ⓐ Actuators may be connected in parallel. Power consumption and input impedance must be observed.
- Ⓐ Actuators may also be powered by 24 VDC.
- Ⓐ Only connect common to neg. (-) leg of control circuits.
- Ⓐ A 500 Ω resistor converts the 4 to 20 mA control signal to 2 to 10 VDC.
- Ⓐ Control signal may be pulsed from either the Hot (Source) or Common (Sink) 24 VAC line.
- Ⓐ Contact closures A & B also can be triacs. A & B should both be closed for the triac source and open for triac sink.
- Ⓐ Actuators with plenum rated cable do not have numbers on wires; use color codes instead.



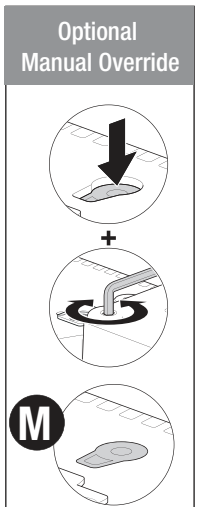
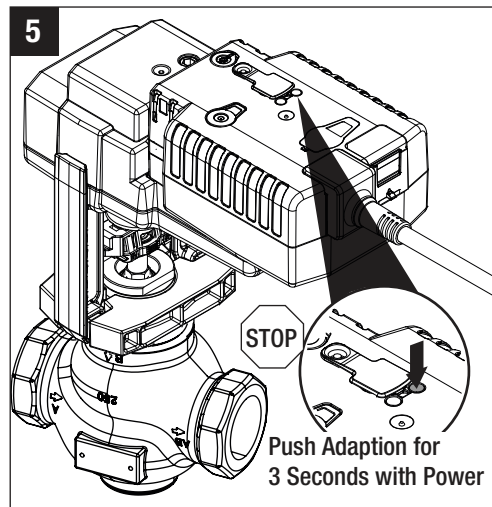
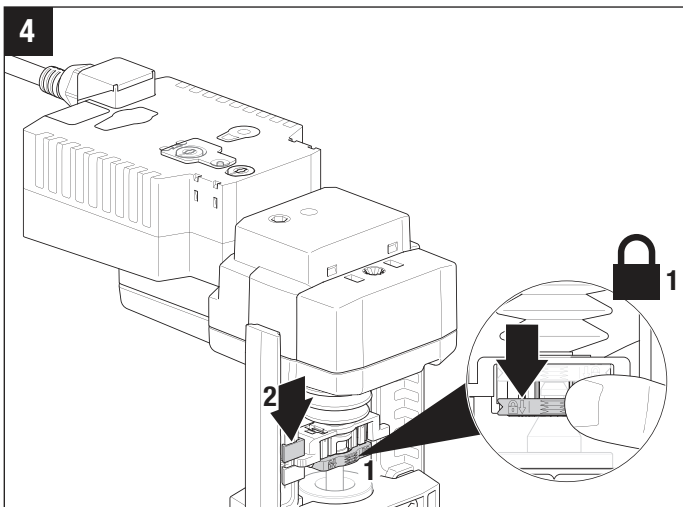
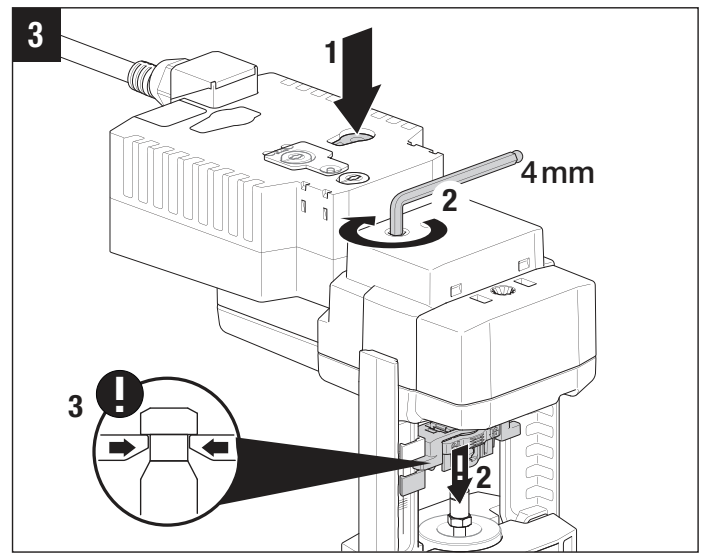
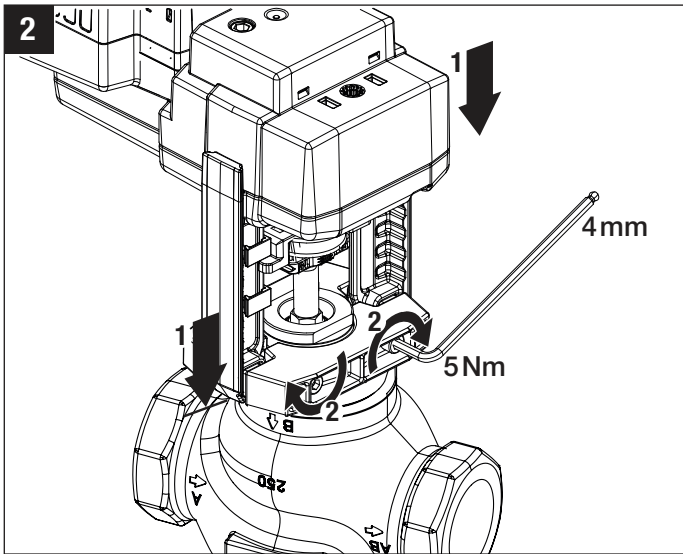
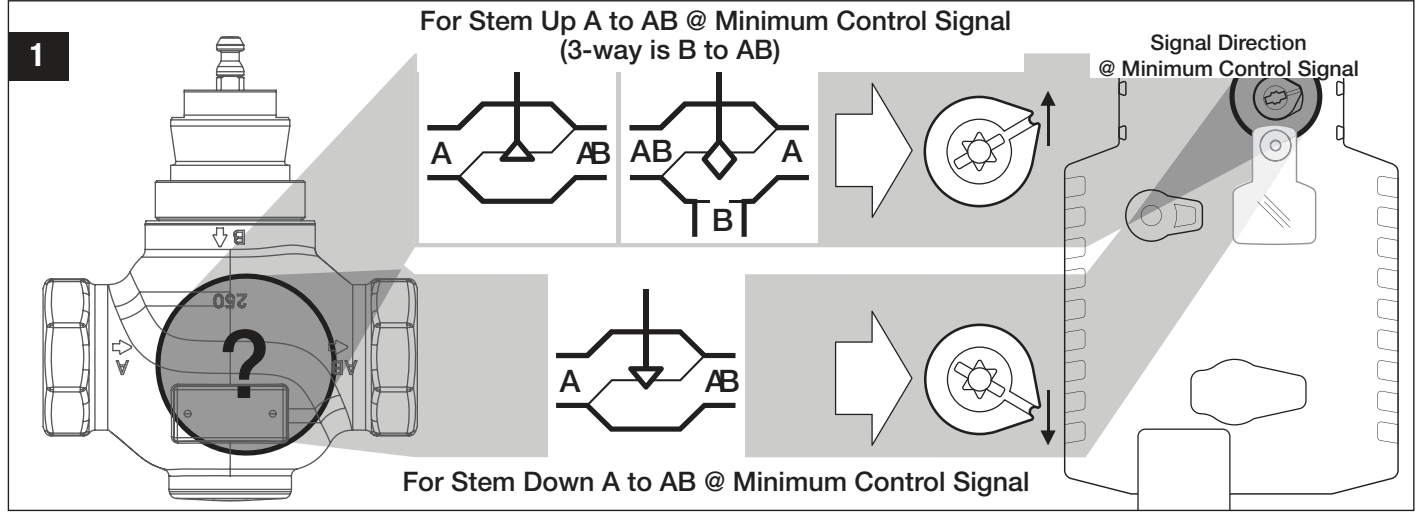
VDC / 4 to 20 mA



Override Control Min, Mid, Max Positions

- BRN Brown
- Blu Blue
- ORG Orange
- PNK Pink
- WHT White
- RED Red
- BLK Black
- Brn Brown
- Azul Blue
- Anaranjado Orange
- Rosa Rosa
- Cor-de-ros Cor-de-ros
- Bianco White
- Bianco White
- Blanco White
- Blanco White
- Red Rojo
- Rouge Rouge
- Vermeelho Vermelho
- Brn Brown
- Azul Blue
- Anaranjado Orange
- Rosa Rosa
- Cor-de-ros Cor-de-ros
- Bianco White
- Bianco White
- Blanco White
- Blanco White
- Red Rojo
- Rouge Rouge
- Vermeelho Vermelho
- Brn Brown
- Azul Blue
- Anaranjado Orange
- Rosa Rosa
- Cor-de-ros Cor-de-ros
- Bianco White
- Bianco White
- Blanco White
- Blanco White
- Red Rojo
- Rouge Rouge
- Vermeelho Vermelho

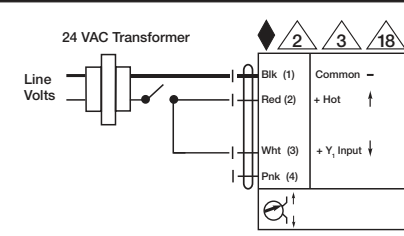
BGVL/G2/G3 Linkage with LVK and SVK Series Actuators



BGVL/G2/G3 Linkage with LVK and SVK Series Actuators

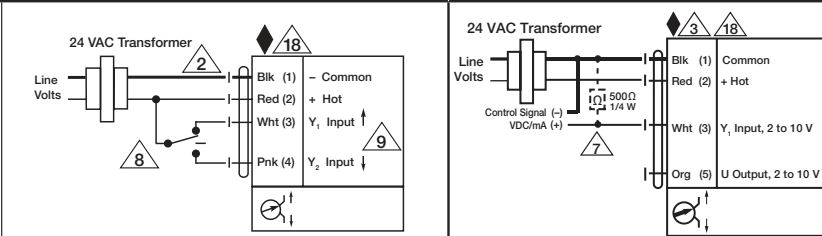
WIRING DIAGRAMS

Electronic Fail-Safe Actuator with -3

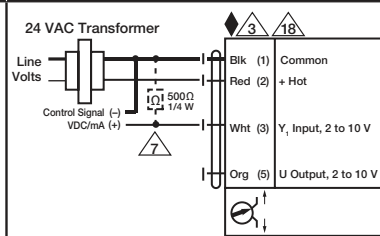


On/Off

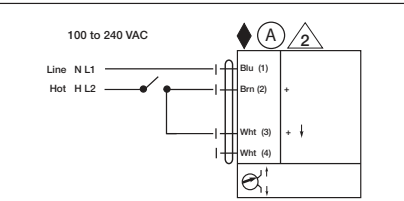
Electronic Fail-Safe Actuator with -SR



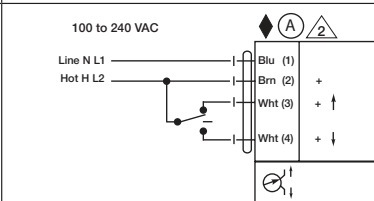
Floating Point



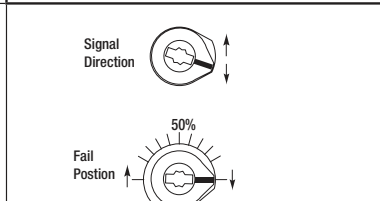
VDC / 4 to 20 mA



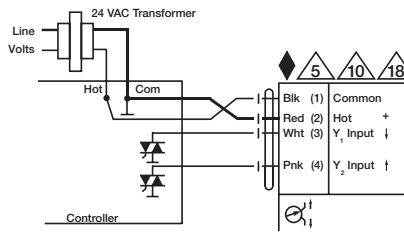
On/Off



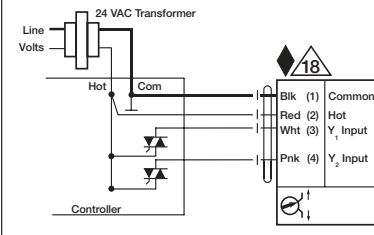
Floating Point



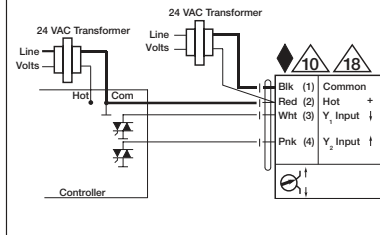
Selector Switches



Triac Sink

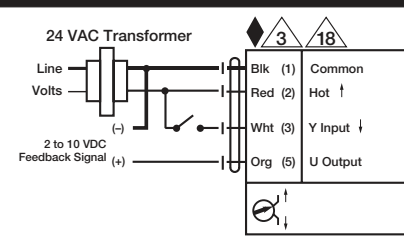


Triac Source

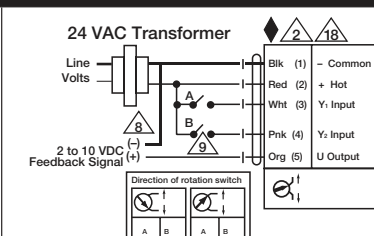


Triac Sink with Separate Transformer

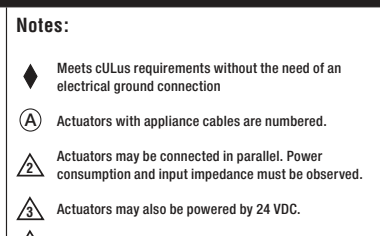
Electronic Fail-Safe Actuator with MFT



On/Off

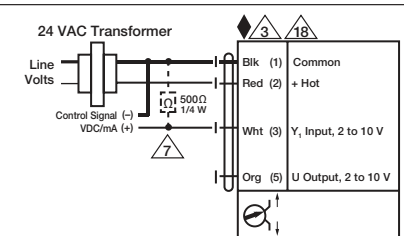


Floating Point

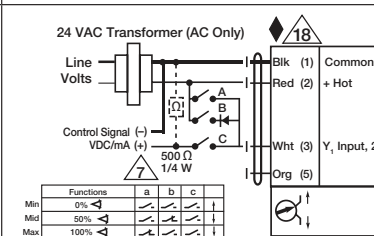


Notes:

- ◆ Meets cULus requirements without the need of an electrical ground connection
- Ⓐ Actuators with appliance cables are numbered.
- Ⓐ Actuators may be connected in parallel. Power consumption and input impedance must be observed.
- Ⓐ Actuators may also be powered by 24 VDC.
- Ⓐ Only connect common to neg. (-) leg of control circuits.
- Ⓐ A 500 Ω resistor converts the 4 to 20 mA control signal to 2 to 10 VDC.
- Ⓐ Control signal may be pulsed from either the Hot (Source) or Common (Sink) 24 VAC line.
- Ⓐ Contact closures A & B also can be triacs. A & B should both be closed for the triac source and open for triac sink.
- Ⓐ Actuators with plenum rated cable do not have numbers on wires; use color codes instead.



VDC / 4 to 20 mA



Override Control Min, Mid, Max Positions

- BRN Brown
- Marron
- Brun
- Marrom
- BLU Blue
- Azul
- Bleu
- Azul
- ORG Orange
- Anaranjado
- Orange
- Alaranjado
- PNK Pink
- Rosado
- Rosa
- Brn
- Cor-de ros
- WHT White
- Bianco
- Blanc
- Bianco
- RED Red
- Rojo
- Rouge
- Vermelho
- BLK Black
- Negro
- Noir
- Preto