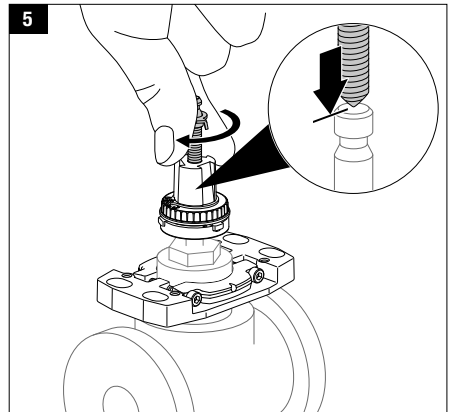
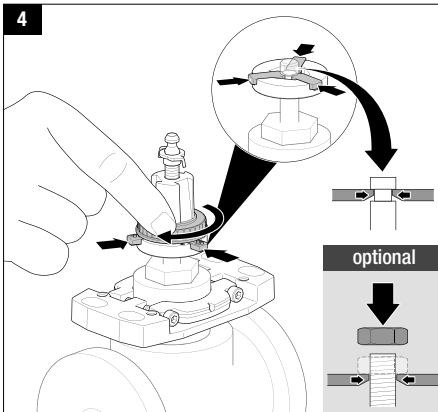
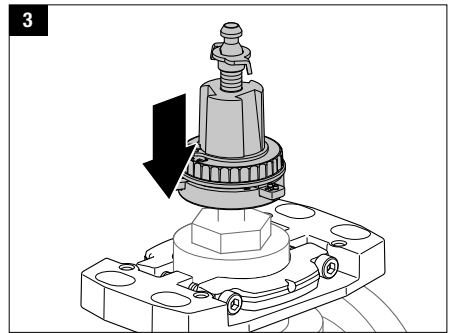
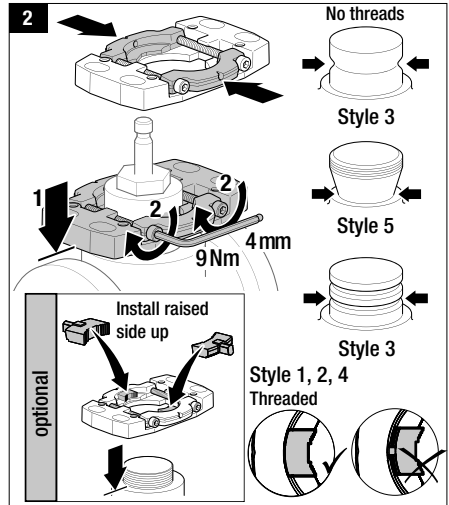
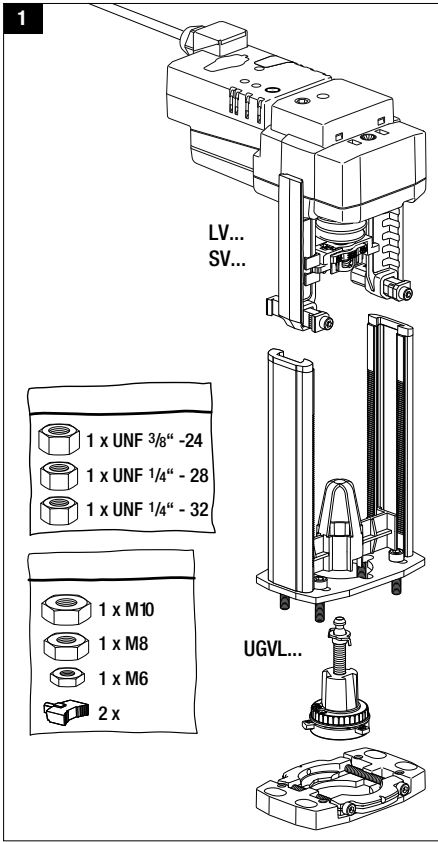


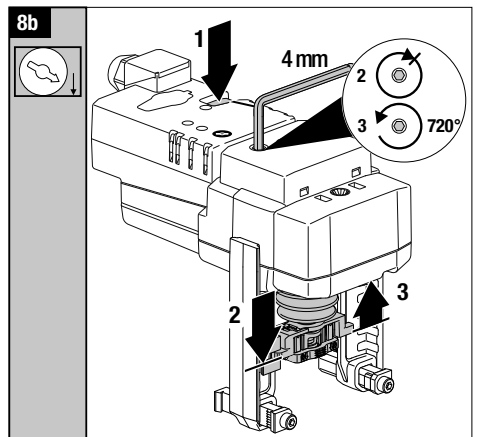
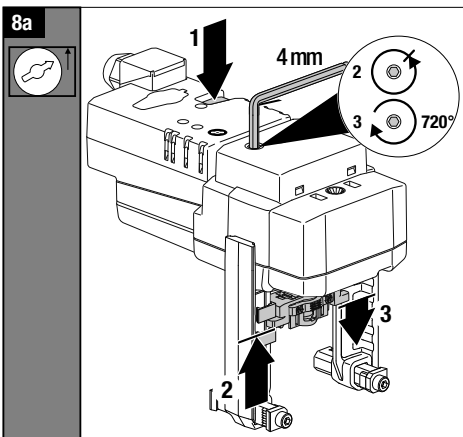
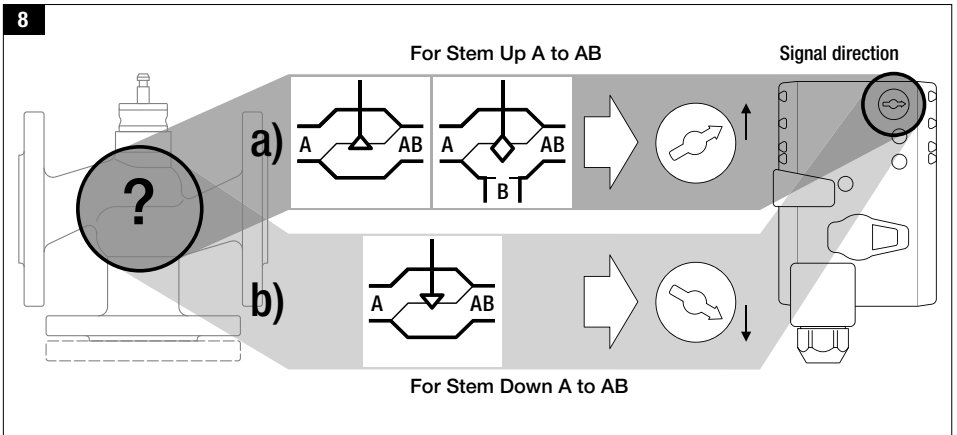
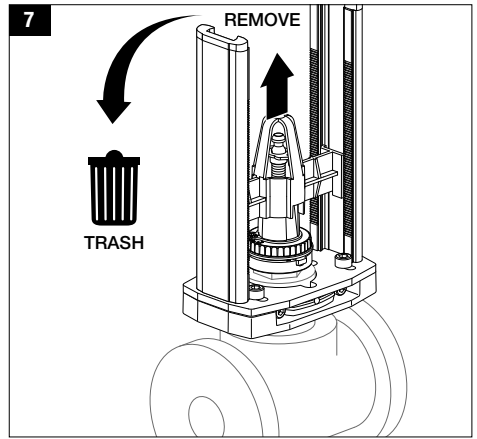
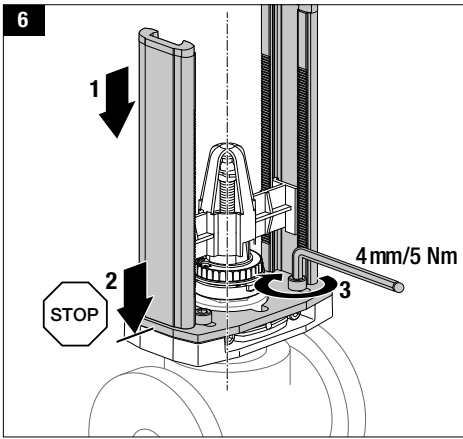
QUICK MOUNT VISUAL INSTRUCTION MANUAL

UGVL Linkage with LV and SV Series Actuators

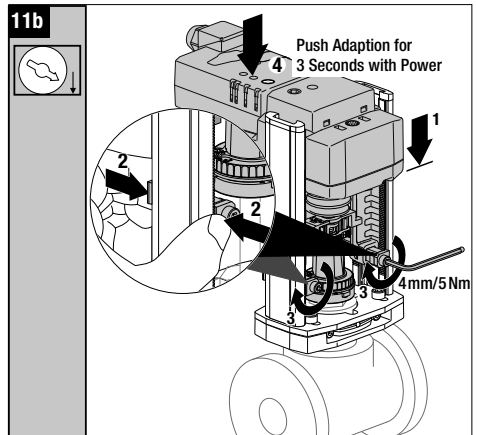
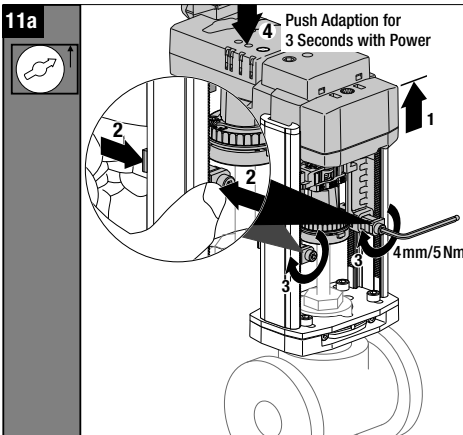
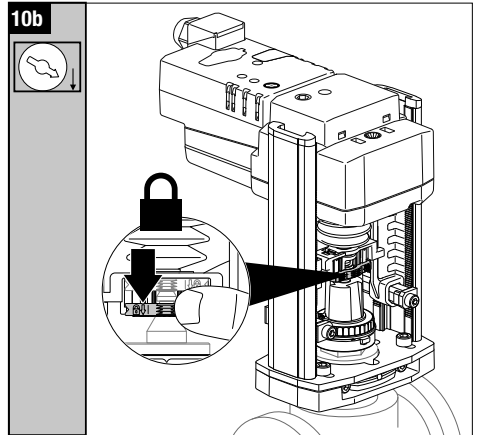
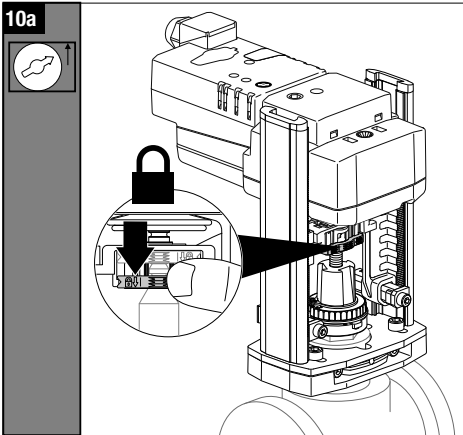
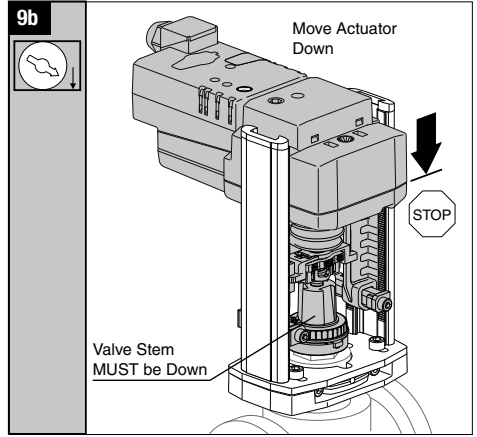
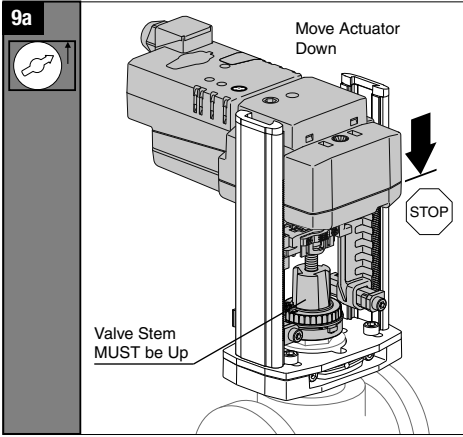


View the installation video for UGVL on Belimo's YouTube channel:
<https://youtu.be/LAwPDb15FYE>

UGVL Linkage with LV and SV Series Actuators



UGVL Linkage with LV and SV Series Actuators



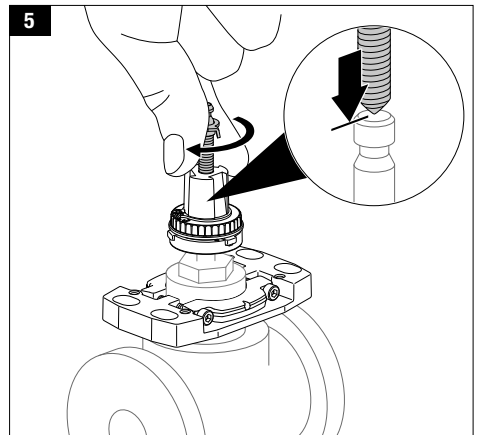
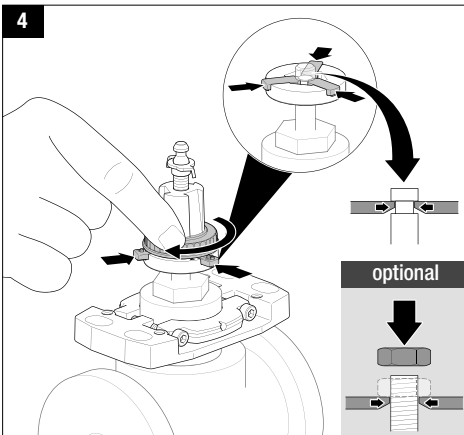
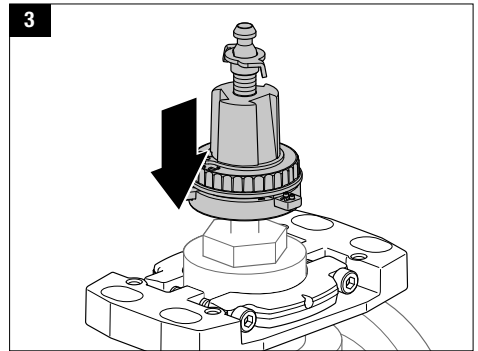
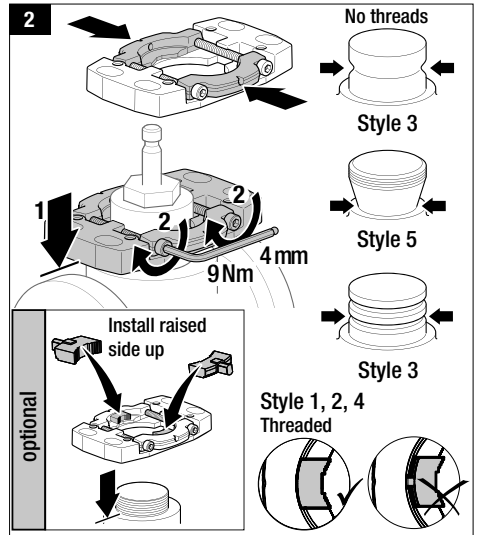
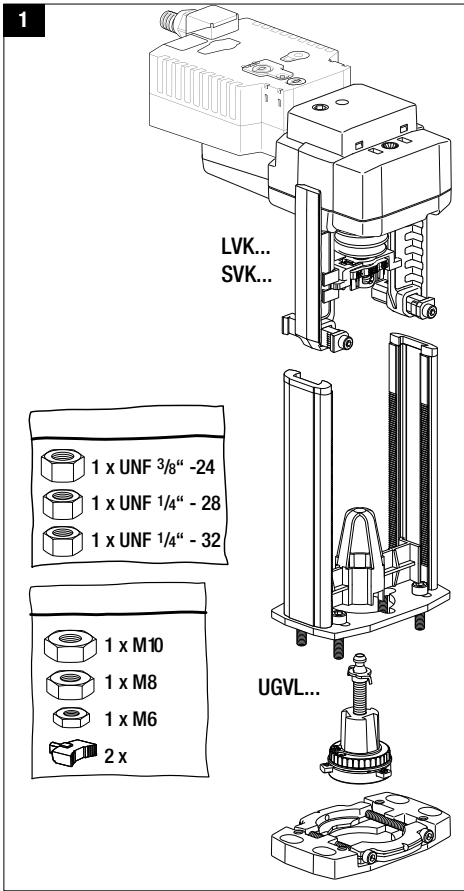
UGVL Linkage with LV and SV Series Actuators

WIRING DIAGRAMS

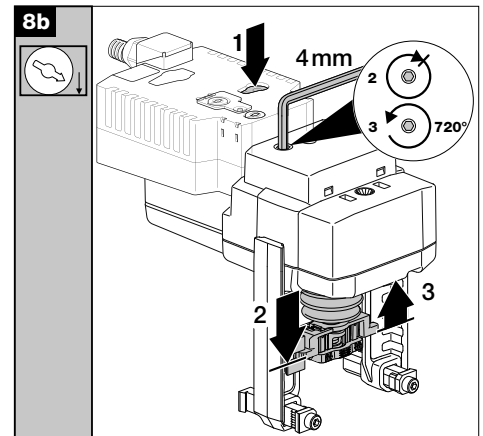
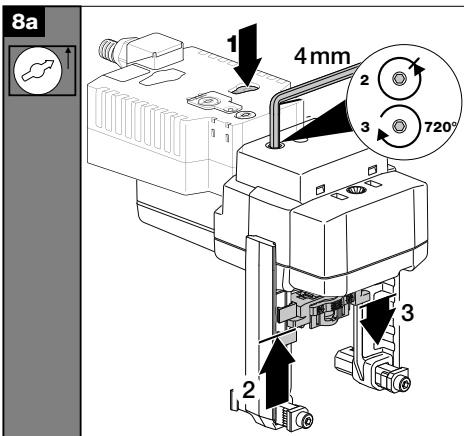
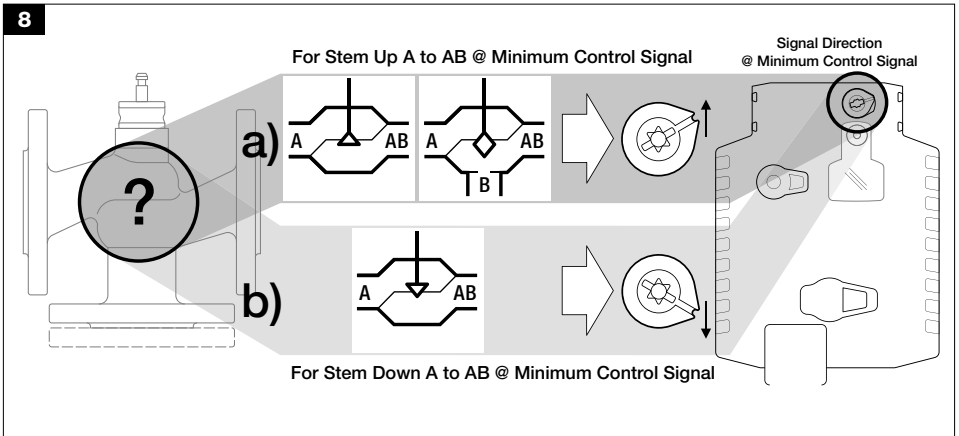
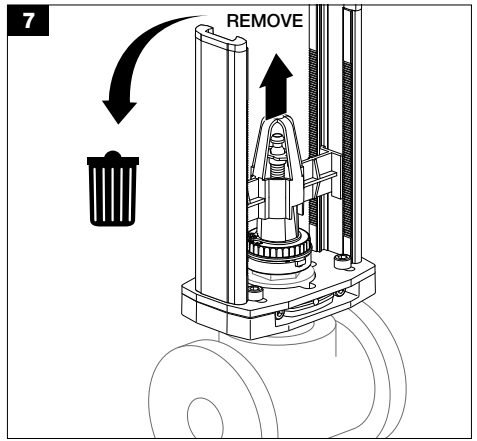
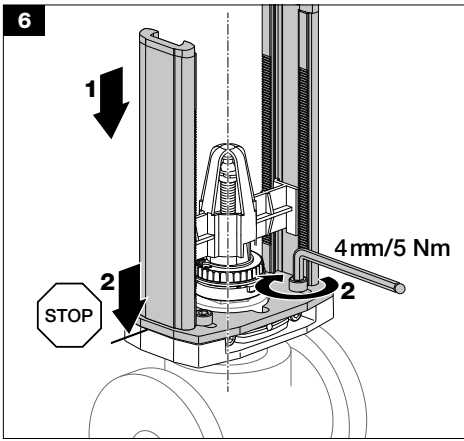
<p>Non-Spring Return Actuator with -3</p> <p>On/Off</p>	<p>24 VAC Transformer</p> <p>Floating Point</p>	<p>Non-Spring Return Actuator with -SR</p> <p>VDC / 4 to 20 mA</p>																												
<p>100 to 240 VAC</p> <p>On/Off</p>	<p>100 to 240 VAC</p> <p>Floating Point</p>	<p>Signal Direction</p> <p>Selector Switch</p>																												
<p>24 VAC Transformer (AC only)</p> <p>Triac Sink</p>	<p>24 VAC Transformer (AC only)</p> <p>Triac Source</p>																													
<p>Non-Spring Return Actuator with MFT</p> <p>On/Off</p>	<p>24 VAC Transformer</p> <p>Floating Point</p>	<p>Notes:</p> <ul style="list-style-type: none"> ◆ Meets cULus requirements without the need of an electrical ground connection Ⓐ Actuators with appliance cables are numbered. ⚠ Actuators may be connected in parallel. Power consumption and input impedance must be observed. ⚠ Actuators may also be powered by 24 VDC. Ⓢ Only connect common to neg. (-) leg of control circuits. Ⓢ A 500 Ω resistor converts the 4 to 20 mA control signal to 2 to 10 VDC. Ⓢ Control signal may be pulsed from either the Hot (Source) or Common (Sink) 24 VAC line. ⚠ Contact closures A & B also can be triacs. A & B should both be closed for the triac source and open for triac sink. ⚠ For triac sink the Common connection from the actuator must be connected to the Hot connection of the controller. Position feedback cannot be used with a triac sink controller. The actuator internal common reference is not compatible. ⚠ IN4004 or IN4007 diode. (IN4007 supplied, Belimo Part number 40155) ⚠ Actuators with plenum rated cable do not have numbers on wires; use color codes instead. 																												
<p>24 VAC Transformer</p> <p>VDC / 4 to 20 mA</p>	<p>24 VAC Transformer (AC Only)</p> <p>Override Control Min, Mid, Max Positions</p> <table border="1"> <thead> <tr> <th>Position</th> <th>1</th> <th>2</th> <th>3</th> <th>4</th> <th>5</th> <th>6</th> </tr> </thead> <tbody> <tr> <td>Min</td> <td>0%</td> <td>✓</td> <td>✓</td> <td>✓</td> <td>✓</td> <td>✓</td> </tr> <tr> <td>Mid</td> <td>50%</td> <td>✓</td> <td>✓</td> <td>✓</td> <td>✓</td> <td>✓</td> </tr> <tr> <td>Max</td> <td>100%</td> <td>✓</td> <td>✓</td> <td>✓</td> <td>✓</td> <td>✓</td> </tr> </tbody> </table>	Position	1	2	3	4	5	6	Min	0%	✓	✓	✓	✓	✓	Mid	50%	✓	✓	✓	✓	✓	Max	100%	✓	✓	✓	✓	✓	
Position	1	2	3	4	5	6																								
Min	0%	✓	✓	✓	✓	✓																								
Mid	50%	✓	✓	✓	✓	✓																								
Max	100%	✓	✓	✓	✓	✓																								

- BRN Brown
- BLU Blue
- ORG Orange
- PNK Pink
- WHT White
- RED Red
- BLK Black
- BRN Brown
- MAR Maroon
- BRN Brun
- BLEU Bleu
- ORANGE Orange
- ALOR Alaranjado
- BLU Azul
- ROJO Rojo
- NEGRO Negro
- ROSA Rosa
- BLANCO Blanco
- VERM Vermelho
- BRUN Marrom
- AZUL Bleu
- ALARANJADO Alaranjado
- ROSA Cor-de-rosa
- BRANCO Branco
- VERMELHO Vermelho
- PRETO Preto

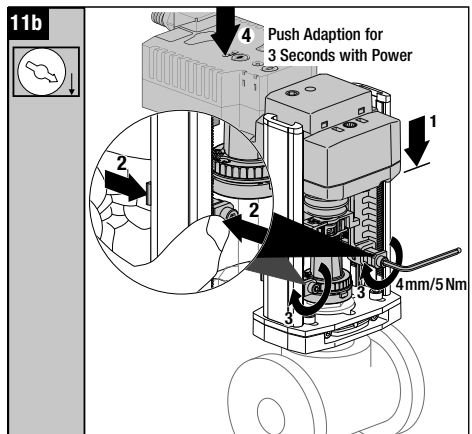
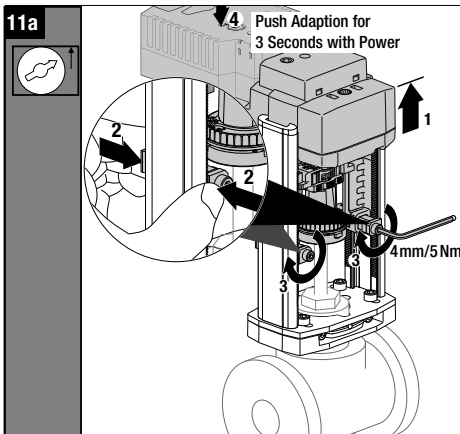
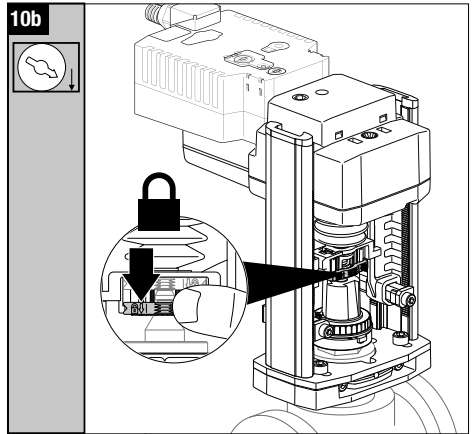
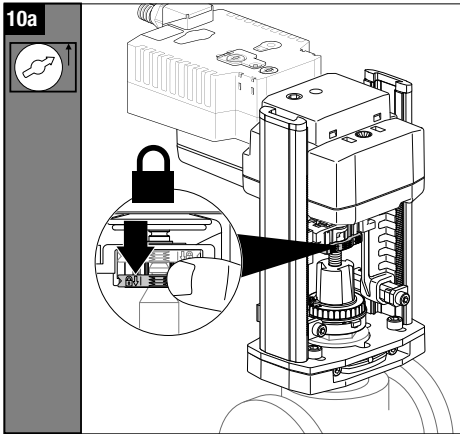
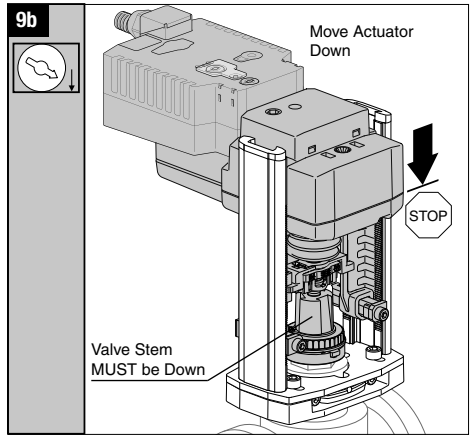
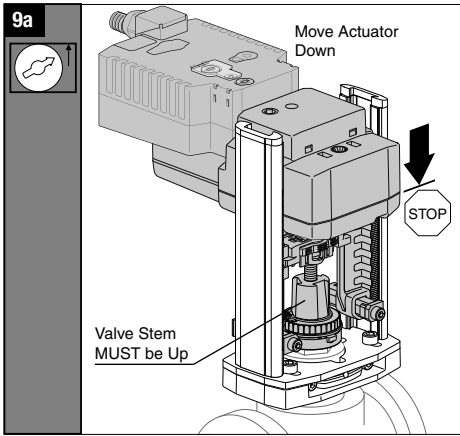
UGVL Linkage with LVK and SVK Series Actuators



UGVL Linkage with LVK and SVK Series Actuators



UGVL Linkage with LVK and SVK Series Actuators

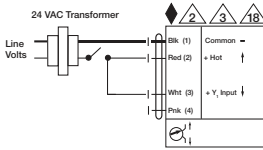


QUICK MOUNT VISUAL INSTRUCTION MANUAL

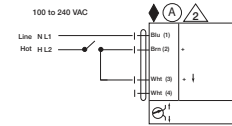
UGVL Linkage with LVK and SVK Series Actuators

WIRING DIAGRAMS

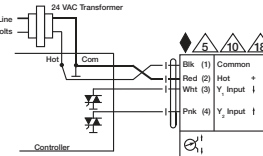
Electronic Fail-Safe Actuator with -3



On/Off

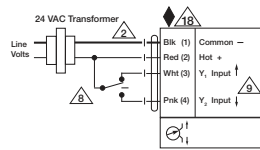


On/Off

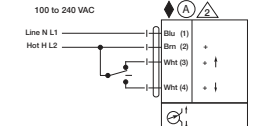


Triac Sink

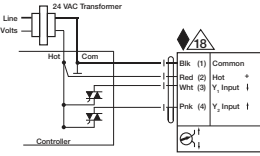
Electronic Fail-Safe Actuator with -SR



Floating Point

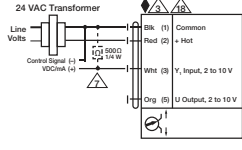


Floating Point

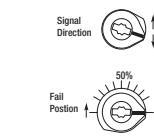


Triac Source

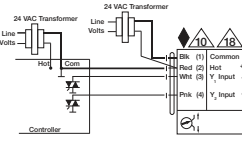
Electronic Fail-Safe Actuator with -SR



VDC / 4 to 20 mA

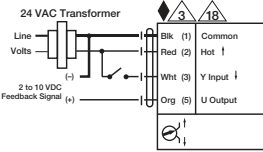


Selector Switches

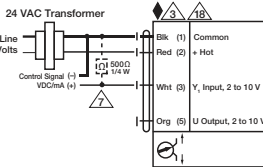


Triac Sink with Separate Transformer

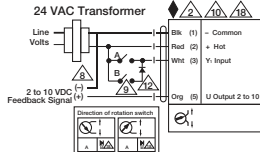
Electronic Fail-Safe Actuator with MFT



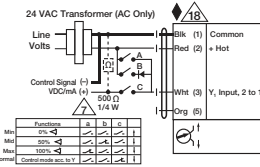
On/Off



VDC / 4 to 20 mA



Floating Point



Override Control Min, Mid, Max Postions

Notes:

- ◆ Meets cULus requirements without the need of an electrical ground connection.
- Ⓐ Actuators with appliance cables are numbered.
- Ⓐ Actuators may be connected in parallel. Power consumption and input impedance must be observed.
- Ⓐ Actuators may also be powered by 24 VDC.
- Ⓐ Only connect common to neg. (-) leg of control circuits.
- Ⓐ A 500 Ω resistor converts the 4 to 20 mA control signal to 2 to 10 VDC.
- Ⓐ Control signal may be pulsed from either the Hot (Source) or Common (Sink) 24 VAC line.
- Ⓐ Contact closures A & B also can be triacs. A & B should both be closed for the triac source and open for triac sink.
- Ⓐ For triac sink the Common connection from the actuator must be connected to the Hot connection of the controller. Position feedback cannot be used with a triac sink controller. The actuator internal common reference is not compatible.
- Ⓐ IN4004 or IN4007 diode. (IN4007 supplied, Belimo Part number 40155)
- Ⓐ Actuators with plenum rated cable do not have numbers on wires; use color codes instead.

BRN Brown
BLU Blue
BLU Blue
AZU Azul
BLU Blue
BRN Brown
MAI Marrom

ORG Orange
ANR Anaranjado
ORG Orange
ANR Anaranjado
COR Cor-de-ros

PNK Pink
ROS Rosado
ROU Rouge
COR-de-ros

WHT White
BLN Blanco
BLN Blanc
BRN Branco

RED Red
ROU Rouge
ROU Rouge
VER Vermelho

BLK Black
NEG Negro
ROU Rouge
NEI Noir
PRET Preto