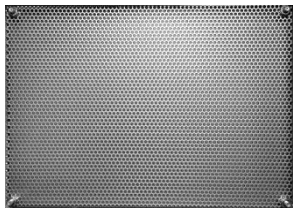
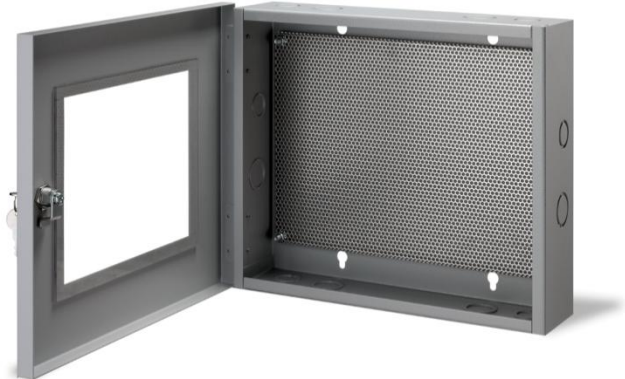
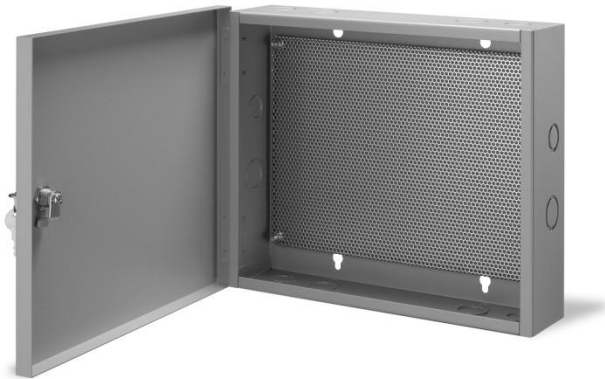


Control Cabinets Quick Reference Guide



Scan code to download
this reference guide

567 Series Control Cabinet Assemblies 9-inch Depth, Ideal for Pneumatic Controls

Features

- Wall mount style, sizes 3 and 4
- NEMA 1 rated for indoor use
- UL Listed, CSA approved
- Control cabinet includes:
 - Pre-punched conduit knockouts
 - Internal galvanized steel perforated sub panel
 - Removable blank doors
 - Identically keyed locks



Applications

These cabinets provide a convenient central location for equipment such as DDC and/or pneumatic systems using either copper or polyethylene tubing or with wired electric/electronic systems. The 9-inch nominal cabinet depth provides extra room for large items.

The empty cabinet box may be installed at the job to permit early rough-in of conduit. Since the door and subpanel can be separated from the cabinet, controls may be mounted to the door subpanel either at the job site or at the field office and connected to the cabinet at your convenience. After reassembly, final connections are then made.

Dimensions, Height x Width x Depth in Inches (mm)

Size 3: 24-5/16 (617) x 24-3/8 (619) x 9-3/8 (238)

Size 4: 36-1/2 (927) x 24-3/8 (619) x 9-3/8 (238)

[Click on this link to download technical instructions](#)

567 Series Control Cabinet Assemblies 6-inch Depth, Ideal for Electronic Controls

Features

- Wall mount style, sizes 1 thru 4
- NEMA 1 rated for indoor use
- UL Listed, CSA approved
- Control cabinet includes:
 - Pre-punched conduit knockouts
 - Internal galvanized steel perforated sub panel
 - Removable blank doors
 - Identically keyed locks



Applications

These cabinets provide a convenient central location for equipment such as BAS electronic controls, metering devices and small pneumatic equipment.

The empty cabinet box can be installed at the job to permit early rough-in of conduit. Since the door and subpanel can be separated from the cabinet, controls may be mounted to the door subpanel either at the job site or at the field office and connected to the cabinet at your convenience. After reassembly, final connections are then made.

Dimensions, Height x Width x Depth in Inches (mm)

Size 1: 19-1/2 (495) x 16-3/8 (416) x 5-3/4 (146)

Size 2: 20 (508) x 20 (508) x 6 (152)

Size 3: 24-5/16 (617) x 24-3/8 (619) x 6 (152)

Size 4: 36-1/2 (927) x 24-3/8 (619) x 6 (152)

[Click on this link to download technical instructions](#)

567 Series Control Cabinet Assemblies 3.5-inch Depth, Ideal for Small Electronics

Features

- Wall mount style, size 0
- NEMA 1 rated for indoor use
- UL Listed, CSA approved
- Control cabinet includes:
 - Pre-punched conduit knockouts
 - Internal galvanized steel perforated sub panel
 - Non-removable blank doors
 - Windowed door option
 - Identically keyed locks



Applications

These cabinets provide a convenient central location for equipment such as power metering, small electronic controls and accessories.

These 12" H x 14" W x 3.5 in D cabinets provide a smaller profile for the mounting and protection of small electronic controls or power metering devices. The listing to UL508, Industrial Control Panel Enclosure and having CSA approval (file LR84214) make this small but flexible panel a practical solution for remote mounting requirements.

A convenient "windowed door" model is available to allow external viewing of internal controls and displays without opening the door.

Dimensions, Height x Width x Depth in Inches (mm)

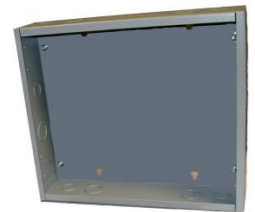
Size 0: 12 (305) x 14 (356) x 3-1/2 (89)

[Click on this link to download technical instructions](#)

567 Series Control Cabinet Components Cabinet Enclosure Only

Features

- Wall mount style, cabinet box only
- NEMA 1 rated for indoor use
- Ideal for rough-in
- Pre-punched conduit knockouts
- Enclosure box includes:
 - Two hinge pins taped inside
 - Nuts and washers for mounting posts



Applications

These cabinets provide a convenient central location for equipment such as DDC and/or pneumatic systems using either copper or polyethylene tubing or with wired electric/electronic systems.

The empty panel can be installed at the job to permit early rough-in of conduit. Since the door and subpanel can be separated from the cabinet, controls may be mounted to the door subpanel either at the job site or at the field office and connected to the cabinet at your convenience. After reassembly, final connections are then made.

Dimensions, Height x Width x Depth in Inches (mm)

Size 1: 19-1/2 (495) x 16-3/8 (416) x 5-3/4 (146)

Size 3: 24-5/16 (617) x 24-3/8 (619) x 9-3/8 (238)

Size 4: 36-1/2 (927) x 24-3/8 (619) x 9-3/8 (238)

[Click on this link to download technical instructions](#)

567 Series Control Cabinet Components Cabinet Doors Only

Features

- Fits control panels of sizes 1, 3 and 4
- Standard grey powder coated finish
- Replacement door for 567 cabinets
- Control cabinet door includes:
 - Standard Siemens panel key lock
 - Two keys taped to door
 - Two door hinge pins taped to door



Applications

These replacement doors provide the 567 control panel assembly a long operational life as doors can be replaced to support new door mounted equipment requirements or to replace previously punched doors.

The empty panel enclosure box can be installed at the job to permit early rough-in of conduit. Since these doors can be separated from the cabinet, controls may be mounted to the door subpanel either at the job site or at the field office and connected to the cabinet at your convenience. After reassembly, final connections are then made.

Dimensions, Height x Width x Depth in Inches (mm)

Size 1: 19-1/2 (495) x 16-3/8 (416) x 3/4 (18)

Size 3: 24-5/16 (617) x 24-3/8 (619) x 3/4 (18)

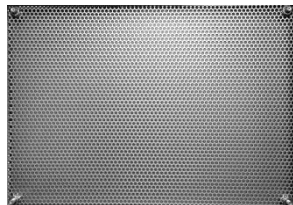
Size 4: 36-1/2 (927) x 24-3/8 (619) x 3/4 (18)

[Click on this link to download technical instructions](#)

567 Series Control Cabinet Components Perforated Mounting Sub-Panels Only

Features

- Sized for cabinet sizes 1, 3 or 4
- Perforated plate supports easy device mounting into cabinet
- Galvanized steel construction
- Ordering number includes sub panel only; fasteners are with panel
- Silver-grey color



Applications

The perforated mounting sub panels are designed to fit the 567 series control cabinet enclosures. They can also be used as a convenient mounting plate in other cabinets or wall mounted device applications.

Outside Dimensions, Height x Width x Depth in Inches (mm)

Size 1: 14-3/4 (375) x 14-1/2 (362) x 1/2 (12)

Size 3: 23 (584) x 19-1/4 (489) x 1/2 (12)

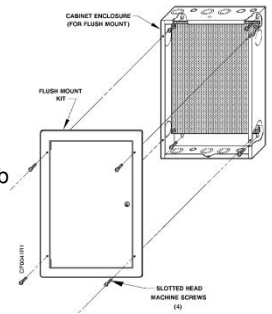
Size 4: 31-1/2 (800) x 22 (559) x 1/2 (12)

[Click on this link to download technical instructions](#)

567 Series Control Cabinet Components Flush Mount Cabinet Options

Features

- Flush wall mount style, size 1
- NEMA 1 rated for indoor use
- UL Listed, CSA approved
- Flush mount cabinet includes:
 - Pre-punched conduit knockouts
 - Internal galvanized steel perforated sub
 - Identically keyed locks
- Flush mount door kit includes:
 - Identically keyed locks
 - Two keys taped to door



Applications

The flush mount control panel assembly is designed to have its enclosure buried into a wall cavity, showing only a flush mount door and plate for use in non-industrial areas.

The flush mount kit includes the escutcheon, hinged locking door and two keys for use with the size 1 cabinet. See the link below for more detail on the use of flush mount cabinets.

[Click on this link to download technical instructions](#)

567 Series Control Cabinet Components Accessories

Features

- Accessories for 567 Control Panel installation and application.

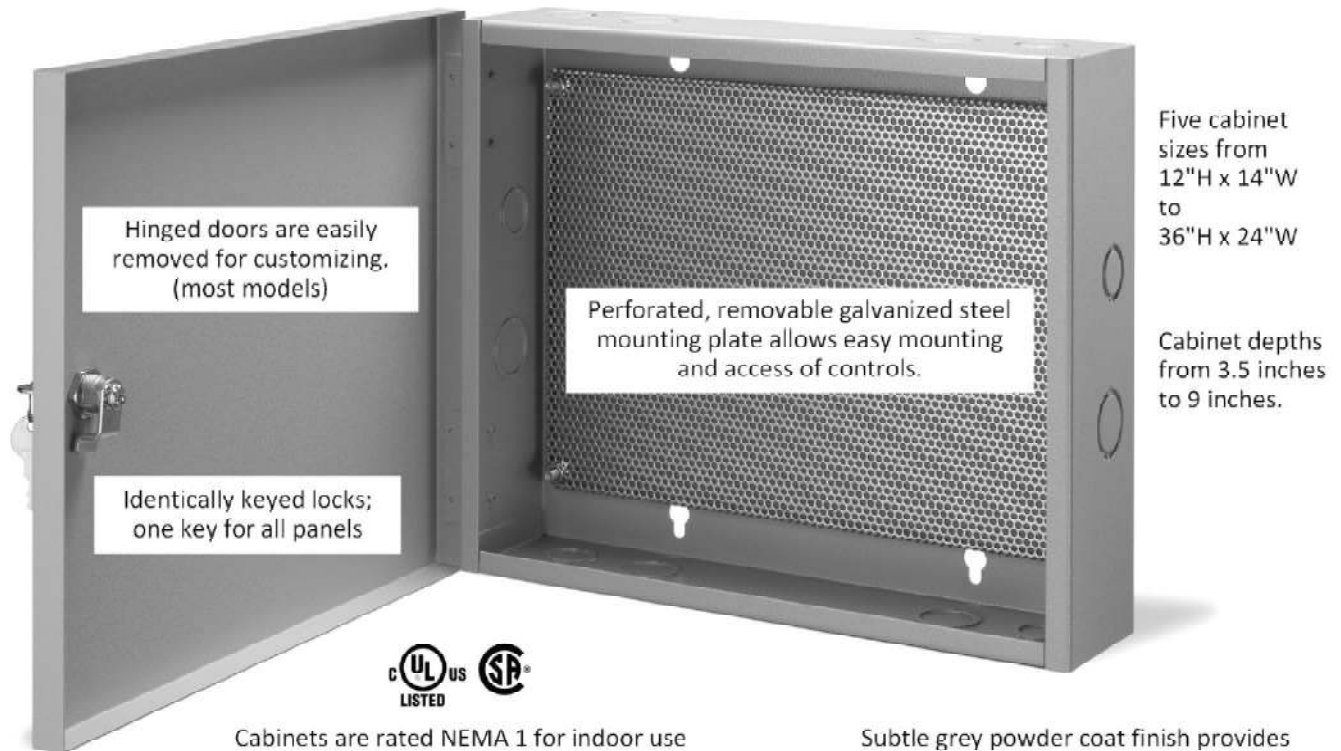
See the link below for more detail on 567 Control Cabinet accessories and replacement parts.

[Click on this link to download technical instructions](#)

Key Features of the 567 Series Control Cabinets

Symmetrical design; providing the flexibility to mount the door on the left or right.

Pre-punched conduit knockouts on all four sides with key mounting holes on rear panel



Cabinets are rated NEMA 1 for indoor use and manufactured under UL 508 Industrial Control Panel Enclosure specifications. They are also CSA approved under LR8414.

Subtle grey powder coat finish provides pleasing uniform appearance.

A Siemens cabinet label is included, but not applied, for optional use by customer.

Control Panel Individual Components Available

Available Component

Enclosure Box Only
Cabinet Door Only
Perforated Mounting Plate
Flush Mounting Cabinet
Flush Mounting Door

Use for Component

For early rough-in mounting of box to "claim space"
For door replacements or to complete rough in box
For mounting plate replacements or to complete rough-in box
Size 1 panel only. Allows for flush face to drywall
Provides flush mount door to any size 1 enclosure box

Information in this document is based on specifications believed correct at the time of publication. The right is reserved to make changes as design improvements are introduced. Product or company names mentioned herein may be the trademarks of their respective owners.

© 2017 Siemens Industry, Inc.

Siemens Industry, Inc.
Building Technologies Division
1000 Deerfield Parkway
Buffalo Grove, IL 60089-4513
USA
+ 1 847-215-1000

Your feedback is important to us. If you have comments about this document, please send them to SBT_technical.editor.us.sbt@siemens.com

Document No. A6V11235772
Printed in the USA
Page 4 of 4